



NTEP's News for You

In This Issue

[Potpourri](#)
[Warm-Season Grass](#)
[Final Reports Online](#)
[New Trials for 2014](#)
[USGA/NTEP Putting](#)
[Green Trial!](#)
[National Arboretum](#)
[turf exhibit and Grass](#)
[Roots update](#)

Quick Links

[News](#)
[More On Us](#)

Join Our List

[Join Our Mailing List!](#)

Volume 5, Issue 1

March 2014

Dear Kevin,

Even though meteorological spring is upon us, in most areas of the country it still may not feel like spring. It has been a long, cold, and snowy or icy (and generally yucky) winter in many regions of the U.S. However, we know that spring will eventually come, and turf and lawn work (and spending on turf products) will commence.

For those of us in the research arena, winters like 2013/2014 may possibly teach us about plant winterhardiness, insect and disease activity and other aspects of Mother Nature. We are always learning, and we hope you are as well.

Let us help you in choosing the best species and cultivars...Please keep in touch with us via social media. And if we can help you in any way, please feel free to [contact us!](#)

Like us on Facebook 

Follow us on [twitter](#)



POTPOURRI

Note the recent happenings!

- A preliminary report of 2013 NTEP trial data is now on our [web site](#).
- Cool-season drought trial data from 2013, the final year, will be

available soon. Watch our facebook and twitter for notice.

- We have updated our upcoming [trial schedule](#) - note a new overseeding trial planned for 2015 and a delay in our native grass/low input trial (we will try and secure a grant to fund this project)
- Our Ky. bluegrass DNA genotyping project conducted by Rutgers University is underway with final results expected sometime in fall 2014.



2013 WARM-SEASON TRIALS

Bermuda, zoysia and a mixed warm-species trial for putting greens were planted in summer 2013

NTEP was fortunate to initiate three trials of new warm-season grasses in 2013, bermuda, zoysia and a three species trial for putting greens. The three trials include a total of 80 vegetative entries and 18 seeded bermudagrasses. Each trial was planted at multiple locations with 2013 serving as an establishment year.



With the severity of winter 2013, we anticipate some winter damage and the need to do some replanting. Since this winter is a unique and unusual situation, we have planted and are growing a few trays of each entry, which will allow us to replace some damaged trials.

It is too early to determine the extent of any damage, but watch this space for updates on winter injury to our new warm-season grass trials.

PLANS FINALIZED FOR 2014 TRIALS

New bentgrass and fineleaf fescue trials for fall 2014

We are putting the finishing touches on our new fineleaf fescue and bentgrass trials, to be established this fall. Our advisory committees discussed and developed recommendations that the NTEP Policy Committee recently approved. 21 trial locations have been approved for the fineleaf fescue trials, and 19 trial locations for each of the bentgrass fairway/tee and bentgrass putting green trials.

In responding to comments from our survey participants, these trials include encouraging some drought stress on the fairway bentgrass standard trials, several on-site (golf course) locations for the putting green bentgrass trial and several fineleaf fescue sites to evaluate traffic under low and high mowing heights.



Information on these trials can be found in the links below:

[2014 NTEP Fineleaf Fescue trial parameters](#)
[2014 NTEP Bentgrass \(Fairway/Tee\) trial parameters](#)
[2014 NTEP Bentgrass \(Putting Green\) trial parameters](#)

A five-year data summary for the recently completed fineleaf fescue and bentgrass trials (established in 2008) will be available on our web site later this summer.

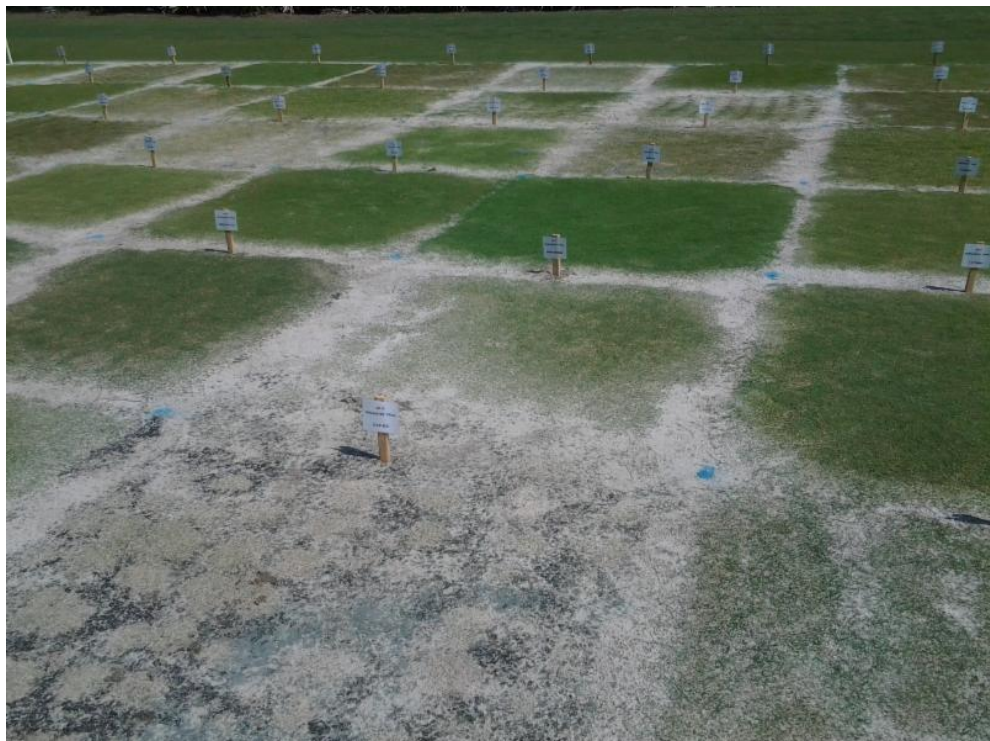
USGA/NTEP PUTTING GREEN TRIAL - LOCATION REPORT

USGA/NTEP warm-season trial evaluates bermuda, zoysia and seashore paspalum for putting greens

As reported in earlier newsletters, NTEP has partnered with the USGA to establish a new putting green trial for warm-season grasses. The trial, which includes fifteen (15) bermudagrasses, eleven (11) zoysiagrasses and two (2) seashore paspalum [entries](#), contains several interesting plant types. The trial has been planted at [eleven locations](#) across the south, southwest and Transition Zone.

Trial management goals are to achieve stimpmeter readings of 9-10' while reducing inputs, as compared to ultradwarf bermudas. [Initial establishment and management parameters](#) parameters have been developed and these will be tweaked over time.

After visiting our trial site at the Jupiter Hills Club in Tequesta, FL, several photos showed some of the excellent differences among entries thus far. When all entries are fully grown in, the plots will be allowed to spread together and greens height mowing and management will commence.



More photos can be found at the following link on our Facebook page:
https://www.facebook.com/pages/National-Turfgrass-Evaluation-Program-NTEP/211071758946111?hc_location=timeline

Please remember, it is early in the trial cycle and results may (and most likely will) change over the five year trial period. Many thanks to Dr. John Cisar, University of Florida, Steve Ehrbar, director of grounds at Jupiter Hills and their staffs for their efforts!

The warm-season putting green trial is made possible with considerable funding from the [United States Golf Association Green Section Research Program](#). We truly appreciate the support of the USGA in funding this project! In addition, John Locker at [Xton](#) has graciously donated winter covers for six of our sites (valued at over \$7,500), to ensure that the trials are protected during this first winter of grow-in and establishment (and beyond). We really appreciate Xton's support of this project!

NATIONAL ARBORETUM TURF EXHIBIT and GRASS ROOTS UPDATE

The *Grass Roots* outdoor turfgrass exhibit is under construction!

An outdoor turfgrass exhibit at the National Arboretum, the first of its kind at any location, is finally under construction, about 2.5 years after the initial concept was proposed. A group of National Arboretum staff, turf industry personnel, designers from various aspects of the green industry and suppliers have come together to make this happen. Their hard work, dedication and cooperation are producing an outstanding exhibit that will showcase turf and landscape benefits for the next four years, and the *Grass Roots* Initiative for many years afterward.





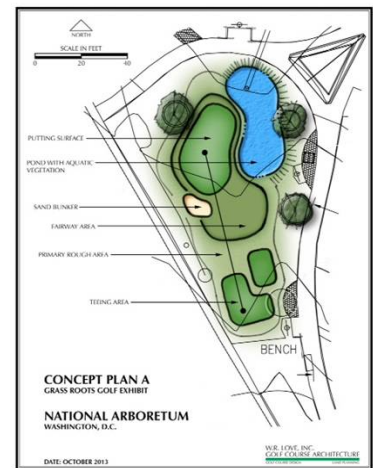
The first element to be constructed is the Sports Field display, which includes a section of natural turf adjacent to an artificial turf field. Thanks to Carolina Green for their donation of time and materials!

For the past several newsletters, we have outlined the development of the outdoor turfgrass exhibit to be established at the [U. S. National Arboretum](#), a 446 acre USDA, ARS research and education public gardens facility two miles from the U.S. Capitol in Washington, DC. In addition, we have discussed the four-year focus on turfgrass entitled *Grass Roots*. [Grass Roots](#) will include a series of workshops, symposia and demonstrations over the four-year period, with the centerpiece of the program being the outdoor turfgrass exhibit.

The exhibit features 14 elements including a small scale golf hole, a small green roof, a rain garden, and over **40 different ornamental grass species**, as well as other interesting displays (see the following maps). Scientific review of the messaging for each element was completed by a committee of scientists from the Crop Science Society of America. In addition, web-based information has been developed, including a [Question and Answer](#) document, with all of the current web information found [on the National Arboretum web site](#). The web-based information will be expanded over time.



Green Roof vs. Conventional Roof



Mr. Geoffrey Rinehart is the full-time Grass Roots Coordinator and he manages all aspects of *Grass Roots* development. Follow Geoff's progress with *Grass Roots* on at NTF Grass Roots Initiative and [Grass_Roots_NTF](#).

And a new collorary concept, the [National Greenscape Corridor](#), which links the National Arboretum with the [National Mall turf renovations](#) and

[Arlington National Cemetery](#), is under development. All of this information can be found on the web at the [National Turfgrass Federation site](#).

The turf and green industries are stepping up to the plate, with an estimated \$395,000 in funds, product and services being pledged thus far to help in the development and construction of the outdoor exhibit (see our [sponsors](#)). However, we still need your help to get *Grass Roots* rolling and to provide proper maintenance for the exhibit over the four year period.

Sponsorship opportunities are still available (see [sponsorship levels and how to donate](#)). If you have interest in financially sponsoring the outdoor exhibit, please feel free to contact me at 301-504-5125 or kmorris@ntep.org.

We hope this newsletter and future issues provide some important information that you can use in your business or job. Please feel free to contact us if you have any questions.

Sincerely,



Kevin Morris
National Turfgrass Evaluation Program



[Forward this email](#)

 [SafeUnsubscribe](#)

This email was sent to kmorris@ntep.org by kmorris@ntep.org |

[Update Profile/Email Address](#) | Rapid removal with [SafeUnsubscribe™](#) | [Privacy Policy](#).



National Turfgrass Evaluation Program | BARC-West, Bldg. 005, Rm 307 | 10300 Baltimore Blvd. | Beltsville
| MD | 20705